

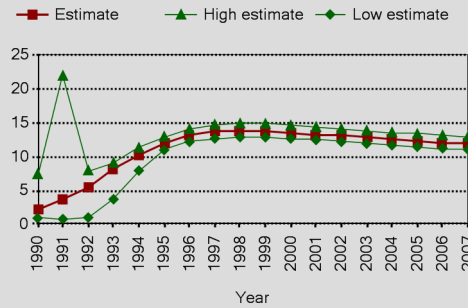
# MALAWI

## Epidemiological Country Profile on HIV and AIDS



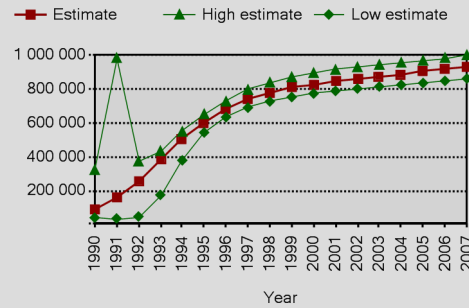
### Epidemic estimates

Estimated adult HIV (15-49) prevalence %



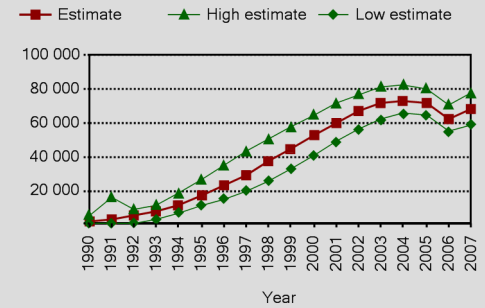
Source: UNAIDS/WHO, 2008

Number of people living with HIV



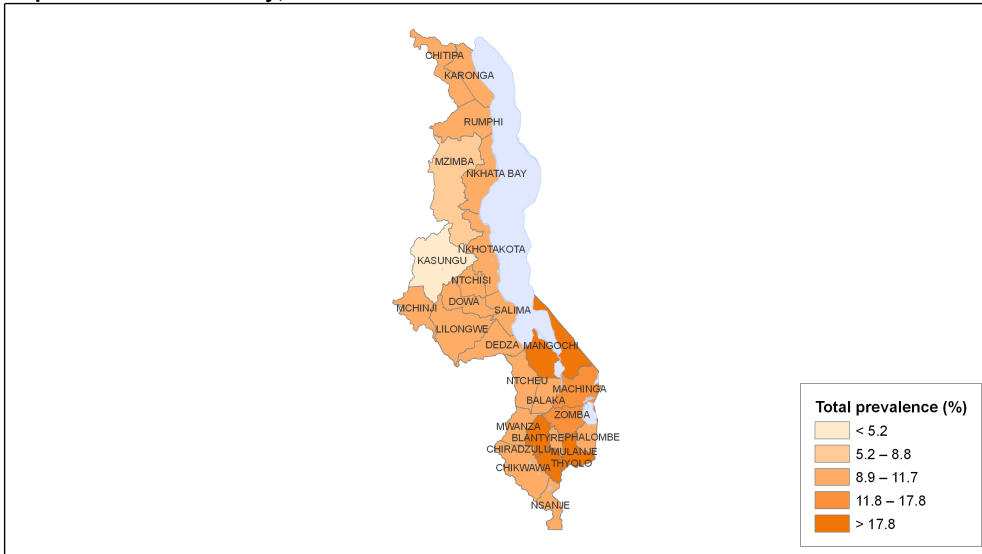
Source: UNAIDS/WHO, 2008

Annual number of AIDS deaths



Source: UNAIDS/WHO, 2008

Adult (aged 15-49 years) HIV prevalence in Malawi districts, Population-based survey, 2004



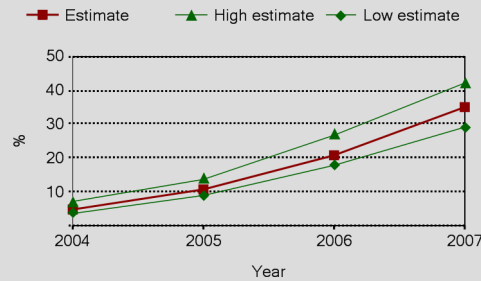
The boundaries and names shown and the designations used on this map do not imply the expression of any opinion whatsoever on the part of the World Health Organization concerning the legal status of any country, territory, city or area or of its authorities, or concerning the delimitation of its frontiers or boundaries. Dotted lines on maps represent approximate border lines for which there may not yet be full agreement. © WHO 2008. All rights reserved.

Data source: National Statistical Office (NSO) [Malawi], and ORC Macro, 2005. Malawi Demographic and Health Survey 2004. UNAIDS, WHO.

Map production: Public Health Information and Geographic Information Systems (GIS) World Health Organization

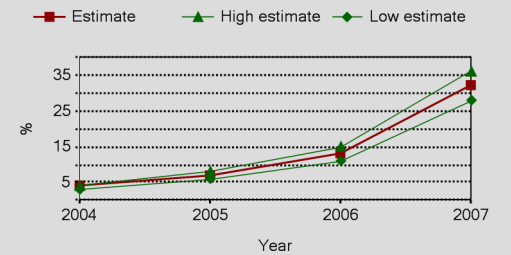
### Coverage estimates (%)

Estimated antiretroviral therapy coverage (%)



Source: UNAIDS/WHO, 2008

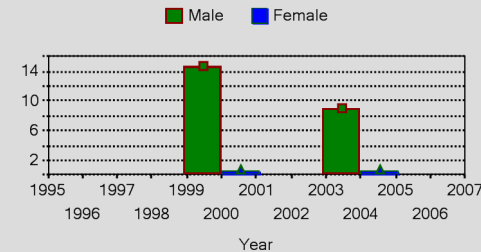
Estimated percentage of pregnant women living with HIV who received antiretrovirals for preventing mother-to-child transmission



Source: UNAIDS/UNICEF/WHO, 2008

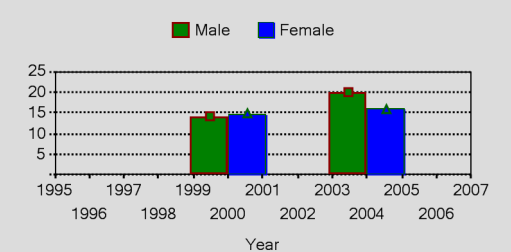
### Trends in behaviours

Percentage of women and men aged 15-49 who have had sexual intercourse with more than one partner in the last 12 month



Source: MEASURE DHS

Percentage of women and men aged 15-49 who have had more than one partner the past 12 months reporting the use of a condom during their last sexual intercourse



Source: MEASURE DHS

Urban and rural adult (15-49) HIV prevalence (%)

Year	Urban	Rural
2004	17.1	10.8

Source: See sources above in map.