

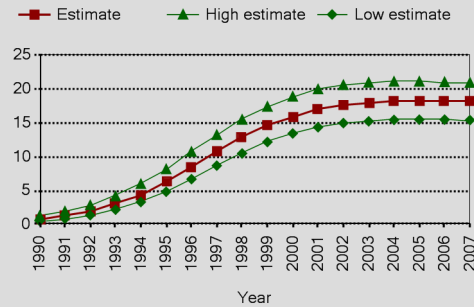
# SOUTH AFRICA

## Epidemiological Country Profile on HIV and AIDS



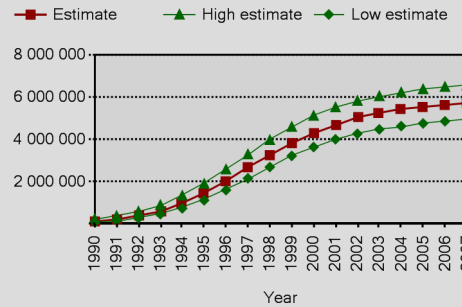
### Epidemic estimates

Estimated adult HIV (15-49) prevalence %



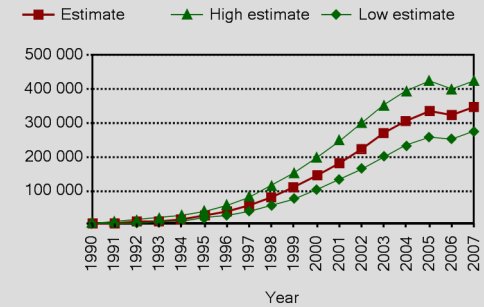
Source: UNAIDS/WHO, 2008

Number of people living with HIV



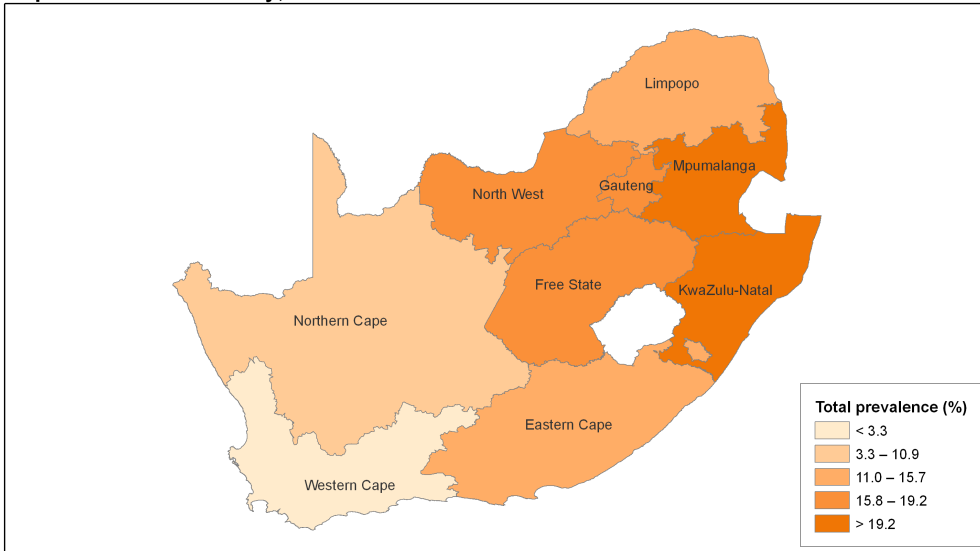
Source: UNAIDS/WHO, 2008

Annual number of AIDS deaths



Source: UNAIDS/WHO, 2008

Adult (aged 15-49 years) HIV prevalence in South Africa provinces, Population-based survey, 2005



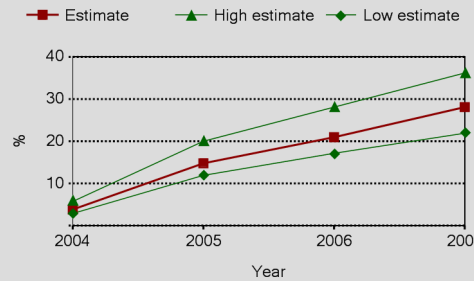
The boundaries and names shown and the designations used on this map do not imply the expression of any opinion whatsoever on the part of the World Health Organization concerning the legal status of any country territory, city or area or of its authorities, or concerning the delimitation of its frontiers or boundaries. Dotted lines on maps represent approximate border lines for which there may not yet be full agreement. © WHO 2008. All rights reserved.

Data source: Shisana O, Rehle T, Simbayi LC, Parker W, Zuma K, Bhana A, Connolly C, Jooste S, Pillay V et al. (2005) South African National HIV Prevalence, HIV Incidence, Behaviour and Communication Survey, 2005. UNAIDS. WHO.

Map production: Public Health Information and Geographic Information Systems (GIS) World Health Organization

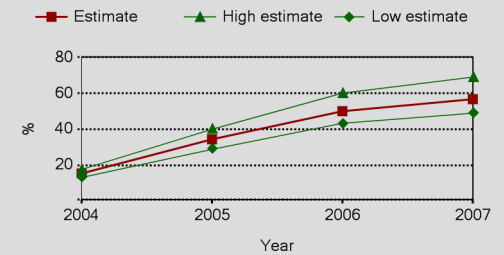
### Coverage estimates (%)

Estimated antiretroviral therapy coverage (%)



Source: UNAIDS/WHO, 2008

Estimated percentage of pregnant women living with HIV who received antiretrovirals for preventing mother-to-child transmission



Source: UNAIDS/UNICEF/WHO, 2008

### Trends in behaviours

Source:

Source:

Urban and rural adult (15-49) HIV prevalence (%)

Year	Urban	Rural
2003	10.6	9.4

Source: See sources above in map.